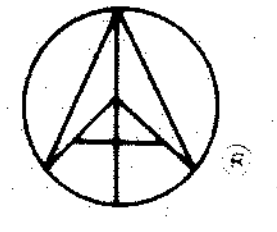
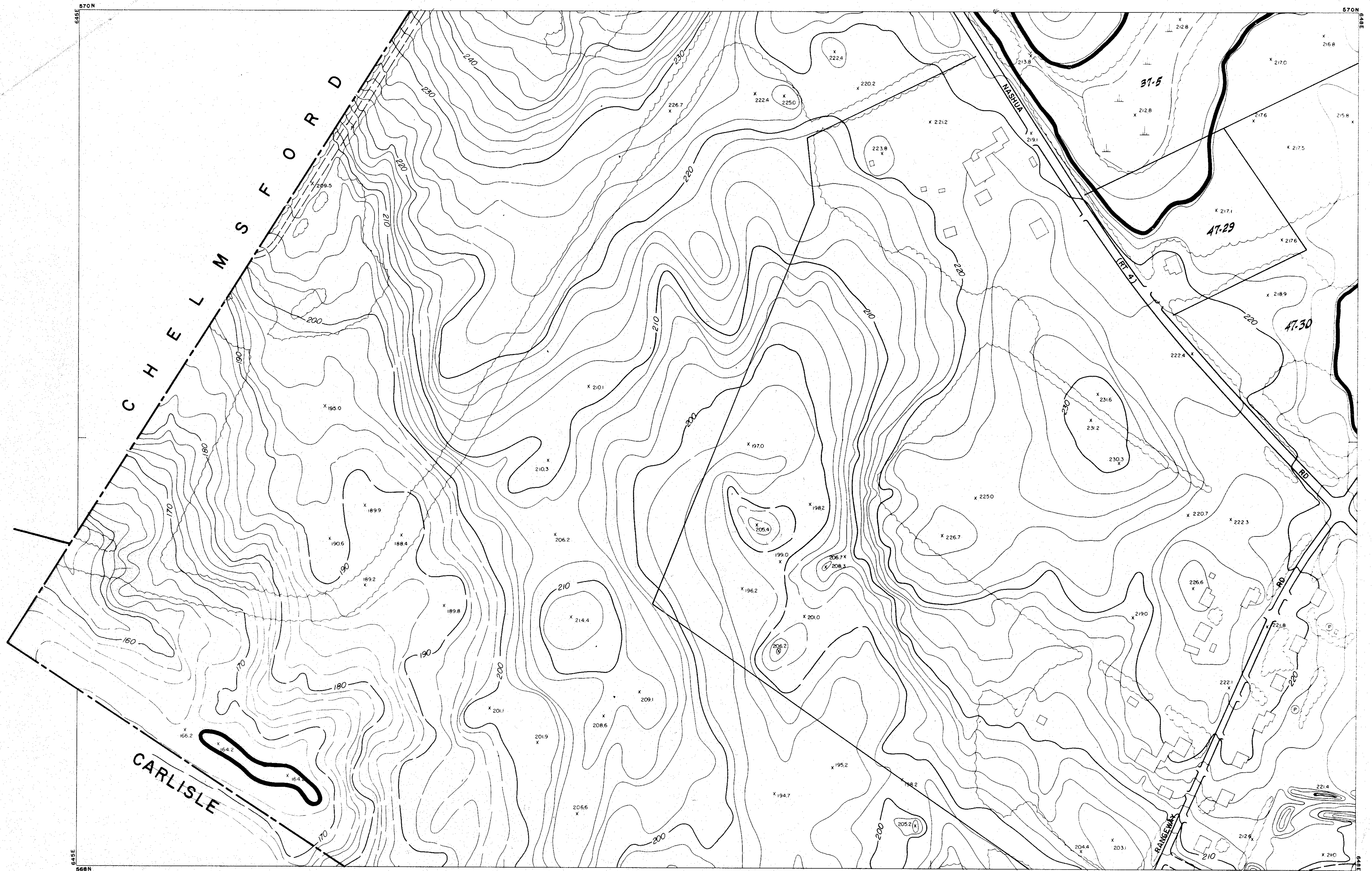
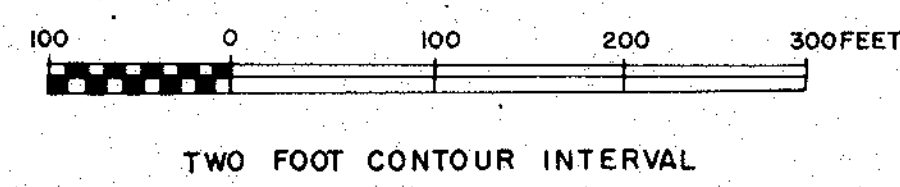


TOWN OF BILLERICA, MASSACHUSETTS



2	8
3	9
4	10

PREPARED FROM PHOTOGRAPHY DATED MAY 11, 1971
 CAMERA: WILD RC-8 FOCAL LENGTH 152.58 MM.
 AVERAGE FLIGHT ALTITUDE 3400 FEET A.S.L.
 HORIZONTAL AND VERTICAL DATUM IS M.G.S. & U.S.G.S.



LEGEND

FLOOD PLAIN LIMIT
(Outside Edge of Line)

LOT LINES

TAX MAP NO. - LOT NO.

PREPARED BY
GREEN ENGINEERING AFFILIATES, INC.
 BILLERICA, MASS.